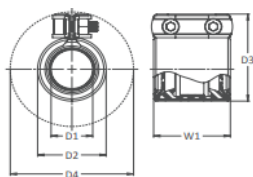
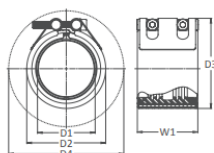


Wymiary Axilock-S



D1 DZ Rury	Tolerancja DZ	Ciśnienie robocze		Naciąg osiowy	W1	D2	D3	D4	Rozmiar śruby	Nasada sześciokątna	Waga	Ilość w kartonie
		[bar]	[bar]									
[mm]	[mm]	[bar]	[bar]	[N]	[mm]	[mm]	[mm]	[mm]		[mm]	[kg]	
21.3	21.0/21.6	16	42	5704	45	34	50	77	2 x M6	5	0.15	24
26.9	26.6/27.3	16	42	8528	45	39	56	83	2 x M6	5	0.16	24
28.0	27.7/28.4	16	42	8994	45	40	57	84	2 x M6	5	0.16	24
30.0	29.7/30.4	16	42	9900	45	42	59	86	2 x M6	5	0.17	24
33.7	33.3/34.1	16	42	11600	45	46	63	90	2 x M6	5	0.17	24
35.0	34.7/35.4	16	42	12031	45	47	64	91	2 x M6	5	0.18	24



D1 DZ Rury	Tolerancja DZ	Ciśnienie robocze		Naciąg osiowy	W1	D2	D3	D4	Rozmiar śruby	Nasada sześciokątna	Waga	Ilość w kartonie
		[bar]	[bar]									
[mm]	[mm]	[bar]	[bar]	[N]	[mm]	[mm]	[mm]	[mm]		[mm]	[kg]	
38	37.0/39.0	16	42	14069	65	55	67	130	2 x M8	6	0.42	12
42.4	41.4/43.4	16	42	16950	65	60	71	132	2 x M8	6	0.43	12
44.5	43.5/45.5	16	42	18360	65	62	73	134	2 x M8	6	0.45	12
48.3	47.3/49.3	16	42	21263	65	66	77	136	2 x M8	6	0.47	12
54.0	53.0/55.0	16	42	25463	88	71	97	138	2 x M8	6	0.72	12
57.0	56.0/58.0	16	42	27570	88	74	90	140	2 x M8	6	0.85	12
60.3	59.0/62.0	16	42	30855	88	78	93	143	2 x M8	6	0.87	12
63.0	62.0/65.0	16	42	32432	88	80	96	145	2 x M8	6	0.90	12
67.0	66.0/69.0	16	42	35271	88	84	100	147	2 x M8	6	0.90	12
70.0	69.0/72.0	16	42	36575	88	87	103	150	2 x M8	6	0.91	12
73.0	72.0/75.0	16	42	35590	88	90	106	152	2 x M8	6	0.93	12
76.1	75.0/78.0	16	42	37312	88	94	109	185	2 x M10	8	0.95	12
82.5	81.5/84.5	16	42	43317	88	101	116	189	2 x M10	8	1.00	12
84.0	83.0/86.0	16	42	43627	88	102	118	190	2 x M10	8	1.02	12
88.9	88.0/91.0	16	42	44352	88	107	123	193	2 x M10	8	1.05	12
98.0	97.0/100.0	16	42	59613	88	116	132	200	2 x M10	8	1.25	12
101.6	100.5/103.5	16	42	63263	88	120	136	202	2 x M10	8	1.28	12
104.0	103.0/106.0	16	42	65779	88	122	138	204	2 x M10	8	1.31	12
108.0	107.0/110.0	16	42	69651	88	126	142	207	2 x M10	8	1.35	12
110.0	109.0/112.0	16	42	72254	88	128	144	208	2 x M10	8	1.41	12
114.3	113.0/116.0	16	42	76987	89	133	149	211	2 x M10	8	1.50	12
118.0	117.0/120.0	16	42	79864	89	137	154	214	2 x M10	8	1.58	5
127.0	126.0/129.0	16	42	87442	89	146	163	221	2 x M10	8	1.75	5
129.0	128.0/131.0	16	42	89562	89	148	165	223	2 x M10	8	1.85	5
133.0	132.0/135.0	16	42	94510	114	152	177	236	2 x M12	10	2.46	5
139.7	139.0/142.0	16	42	101205	114	159	184	241	2 x M12	10	2.65	5
141.3	140.5/143.5	13	34	101968	115	162	187	243	2 x M12	10	2.80	5
144.0	143.0/146.0	13	34	104272	115	164	190	245	2 x M12	10	2.90	4
154.0	153.0/156.0	13	34	112025	115	174	200	253	2 x M12	10	3.05	4
159.0	158.0/161.0	13	34	117195	115	179	205	257	2 x M12	10	3.15	4
165.0	164.0/167.0	13	34	124068	115	185	211	262	2 x M12	10	3.25	4
168.3	167.0/170.0	13	34	126855	115	189	214	265	2 x M12	10	3.40	4
170.0	169.0/172.0	13	34	129431	115	190	216	266	2 x M12	10	3.41	4